

ESSENTIALS IN PEDIATRIC RADIOLOGY

TRAINING FOR CENTRAL (AND FORMER
EASTERN) EUROPE

This is an **European Society of Paediatric Radiology (ESPR)** initiative, at present run as an inter-university project, supported by the **Committee of the Pediatric Radiology Group of the Romanian Radiological Society (GRP-SRIM)**, as a cooperation of the University of Medicine and Pharmacy (UMF) „Carol Davila” Bucharest / Romania and the Division of Pediatric Radiology, Department of Radiology, Medical University of Graz (MUG) / Austria.



WWW.RADIOLOGIE-PEDIATRICA.RO/COURSE-2017



COURSE
BUCHAREST
JUNE 20-23 2017

ESSENTIALS IN PEDIATRIC RADIOLOGY

PROGRAMME (JUNE 20-23)

Morning lectures

The methods and their pediatric applications will be presented - Radiography and Fluoroscopy, Ultrasound, CT and nuclear medicine, MRI and basics for interventions.

Morning Hands-on / participation in clinical routine in small groups

Afternoon lectures

System and age oriented, specific paediatric challenges (NAI, trauma imaging, etc.).

Afternoon workshops

Case-based interactive session in small groups focussing on symptom oriented imaging.

COURSE LANGUAGE

English

COURSE LOCATION

**Emergency Hospital for Children
„Grigore Alexandrescu”**

Bucharest, Romania

<http://spitalulgrigorealexandrescu.ro/contact/>

ACCOMODATION / HOTEL

To be booked individually

Details on:

www.radiologie-pediatria.ro/course-2017

DIRECTORS

Michael RICCABONA, Erich SORANTIN - Graz / AT

LOCAL ORGANISERS

Bogdan-Stefan OLTEANU, Ioana-Gabriela LUPESCU - Bucharest / RO,

Carmen-Ana ASAVOAIE, Otilia-Maria FUFUZAN - Cluj-Napoca / RO

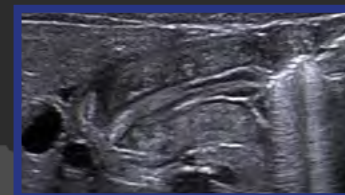
APPLICATION CRITERIA

Maximum 30 participants (20 from Romania, 10 from countries such as Albania, Baltic states, Belarus, Bosnia and Herzegovina, Bulgaria, Kosovo, Macedonia, Moldavia, Montenegro, Serbia, Slovakia, or Ukraine).

Young certified radiologists (first years after certification) or last-year residents, wanting to commit themselves (in a significant proportion) to pediatric radiology, employed (under a long-time or undetermined time contract) in a big hospital (county or municipal hospital or mono-specialty hospital) having at least 1-2 pediatric clinical departments and at least 3-4 radiologists, but no dedicated pediatric radiology.

Applicants of areas with the least pediatric radiology service and training but existing need will be given priority. First come first serve, if criteria do not allow a ranking of applicants. Applicants will be screened for adequacy in cooperation with the national societies.

A few travel grants (200,-€ for Romanian & comparable applicants, or 350,-€ for others) will be provided by the ESPR for very-low-income countries, on a first-come first-served basis. A proof of overall income should be provided together with the application for registration, if a grant is requested. Reimbursements will be made after the course; proof of costs will be necessary.



REGISTRATION & INFORMATION

www.radiologie-pediatria.ro/course-2017

E-mail: contact@radiologie-pediatria.ro

Application deadline: February 28

Selection deadline: March 15

Payment deadline: April 15

REGISTRATION FEES

100€ / Residents 50€ (proof requested)

- coffee breaks and lunch included
 - to be paid in advance as soon as the participation is confirmed / granted
- Note** that if payment is not received by 15th of April 2017, the place will be given to the next on the waiting list